

# MONTHLY MEMBERSHIP PROGRESS REPORT

LOCATION NORTH CAROLINA

District 31 I

Results as of: 2/28/2022

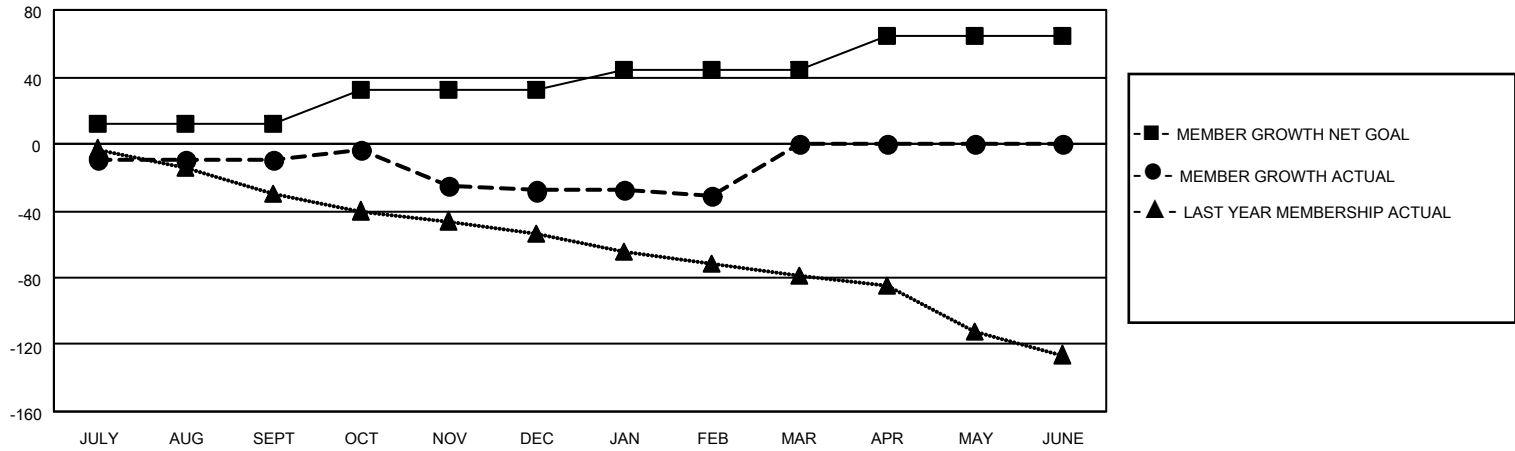
Clubs			
RESULTS FOR 2021-2022			
QUARTER	NEW CLUB GOAL	NEW CLUBS	DROPPED CLUBS
JULY/AUG/SEPT	0	0	0
OCT/NOV/DEC	1	0	0
JAN/FEB/MAR	0	0	0
APR/MAY/JUNE	1	0	0

Members			
RESULTS FOR 2021-2022			
QUARTER	MEMBER GROWTH NET GOAL	MEMBER GROWTH ACTUAL	DROPPED MEMBERS ACTUAL (including transfers)
JULY/AUG/SEPT	12	14	22
OCT/NOV/DEC	20	18	36
JAN/FEB/MAR	12	12	14
APR/MAY/JUNE	20	0	0

**GOALS AND ACTUAL NEW CLUBS CUMULATIVE**



**GOALS AND ACTUAL MEMBERS CUMULATIVE**



**DROPPED CLUBS: 0**

**21 CLUBS OF 50 ADDED 1 OR MORE NEW MEMBERS**

**GENDER DISTRIBUTION**

MALE	620 (66.10%)
FEMALE	318 (33.90%)
NON BINARY	0 (0.00%)
PREFER NOT TO ANSWER	0 (0.00%)

**DROPPED MEMBERS**

[CLICK HERE FOR CUMULATIVE MEMBERSHIP DATA](#)

DECEASED	14
CLUB CANCELLED	0
OTHER	58
<b>TOTAL</b>	<b>72</b>

TOTAL FAMILY UNIT MEMBERS 214

FAMILY MEMBERS PAYING HALF DUES 107